

R E S T R I C T E D

ELECTRICAL AND MECHANICAL
ENGINEERING REGULATIONS
(By Command of the Army Council)

WHEELED VEHICLES
H 257 Mod Instr No.6

ARMoured CAR, DAIMLER, MKS 1 AND 2

TECHNICAL HANDBOOK - MODIFICATION INSTRUCTION

SUMMARY

1. This instruction refers to the fitting of a sealing gland between the tracta joint housing seat and the bevel box casing.

Estimated time required to perform the modification: 24 man-hours (when engine is removed)

2. Items affected:-

Bevel drive, front and rear, nearside and offside

3. Action required by:-

REME units authorized to carry out base repairs:-

- (i) When vehicles are in Base workshops for overhaul, carry out this modification in accordance with the details given in paras 7 and 8 and Figs 1 and 2.
- (ii) Enter and endorse the modification details in the AB 413 of each vehicle modified.

4. Priority: Group 'C' (ACI 96/54 refers).

5. Stores required:-

The following stores will be demanded through the normal channels, quoting on the indent, EMER Wh Veh H 257 Mod Instr No. 6 together with the WD registration number(s) of the vehicle(s) affected.

Note: Stores will be demanded as sets and NOT by individual items.

<u>VAOS, section</u>	<u>Part No.</u>	<u>Designation</u>	<u>Qty per veh</u>
LV5/BM	SMS 17228	Bevel box, modification set comprising:-	1
LV5/BM	FV 247198	Gland (4)	

6. Stores to be modified:-

<u>Part No.</u>	<u>Part No.</u>	<u>Designation</u>	<u>Qty per veh</u>
(prior to EMER Wh Veh H 257 Mod Instr No. 5 being carried out)	(after EMER Wh Veh H 257 Mod Instr No. 5 has been carried out)		
LV5/BM/503591	(FV 210456)	Box, bevel, front offside	1
	(FV 210457)	Box, bevel, front nearside	1

<u>Part No.</u>	<u>Part No.</u>	<u>Designation</u>	<u>Qty</u> <u>per veh</u>
LV5/BM/503590	(FV 210458	Box, bevel, rear offside	1
	(FV 210459	Box, bevel, rear nearside	1

DETAIL

7. In order to overcome the oil leaks from bevel boxes, the bevel box casings will be machined to accept a sealing gland.

8. Proceed as follows:-

- (a) Machine grooves in the bevel box casings as shown in Figs 1 and 2.
- (b) Smear the glands (Part No. FV 247198) with OEP-220 and insert them in the machined grooves.
- (c) Reassemble the bevel boxes.

Note: After machining, the part numbers of the bevel box casings are changed as follows:-

	<u>Before machining</u>	<u>After machining</u>
Front	LV5/BM/503609	FV 160571
Rear	LV5/BM/503608	FV 160572

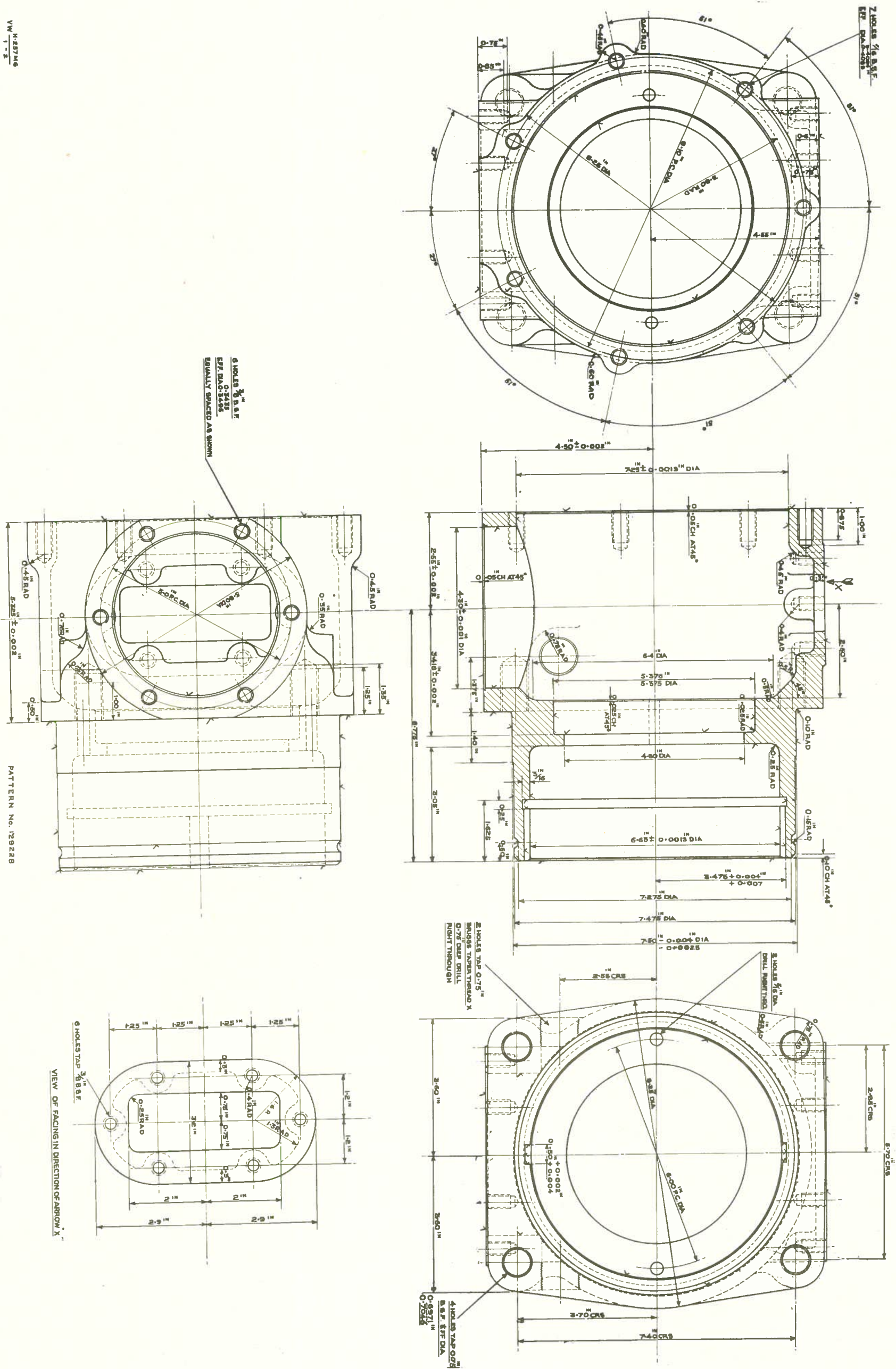


Fig 2 - Bevel box rear

ME 7(a) 2119/3/2 (A 2850) 8/Mods/1259
 FVRDE Approval No. 17228
 Issue 1, 16 May 55

END

WHEELED VEHICLES
H 257 Mod Instr No.6

RESTRICTED

RESTRICTED

Fig 2 - Bevel box, rear

WHEELED VEHICLES
H 257 Mod Instr No.6

RESTRICTED

RESTRICTED

Fig 1 - Bevel box, front